



19 Macklands Way

Rainham, ME8 7PE

Offers in excess of £325,000



Situated on the popular Macklands Way in Rainham, Kent, this well-presented three-bedroom home offers spacious double bedrooms and a bright, airy lounge/diner with neutral décor. The modern fitted kitchen is presented in excellent order and provides access to both the garden and the garage. Upstairs features a contemporary shower room and a generous landing storage cupboard. Additional benefits include a driveway and garage for convenient parking. Ideally located close to Rainham Station, motorway links, and Hempstead Valley Shopping Centre, this property is perfect for buyers seeking comfort and convenience. NO CHAIN.



Door to Hallway

10'8 x 3'6 (3.25m x 1.07m)

Lounge/Diner

19'2 x 10'8 (5.84m x 3.25m)

Kitchen

10'5 x 8'0 (3.18m x 2.44m)

Stairs from Hallway

Landing

Bedroom 1

12'10 x 8'2 (3.91m x 2.49m)

Shower Room

6'4 x 6 (1.93m x 1.83m)

Bedroom 2

12'0 x 7'9 (3.66m x 2.36m)

Bedroom 3

10'8 x 7'5 (3.25m x 2.26m)

Garden

25' x 20' approx (7.62m x 6.10m approx)

Garage

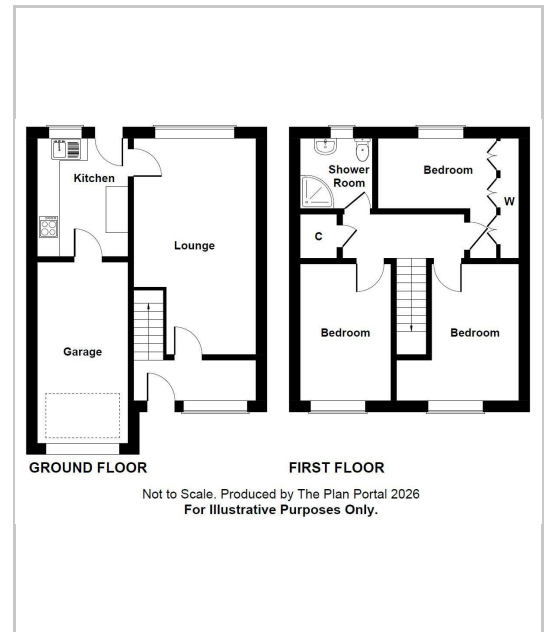
16'2 x 8'2 (4.93m x 2.49m)

Important Notice -

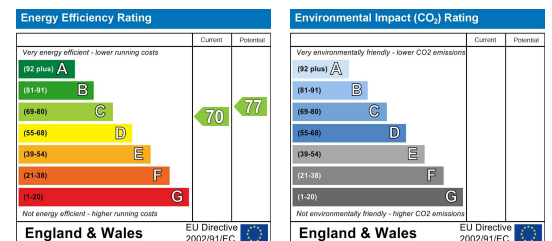
Area Map



Floor Plans



Energy Efficiency Graph



These particulars, whilst believed to be accurate are set out as a general outline only for guidance and do not constitute any part of an offer or contract. Intending purchasers should not rely on them as statements of representation of fact, but must satisfy themselves by inspection or otherwise as to their accuracy. No person in this firm's employment has the authority to make or give any representation or warranty in respect of the property.